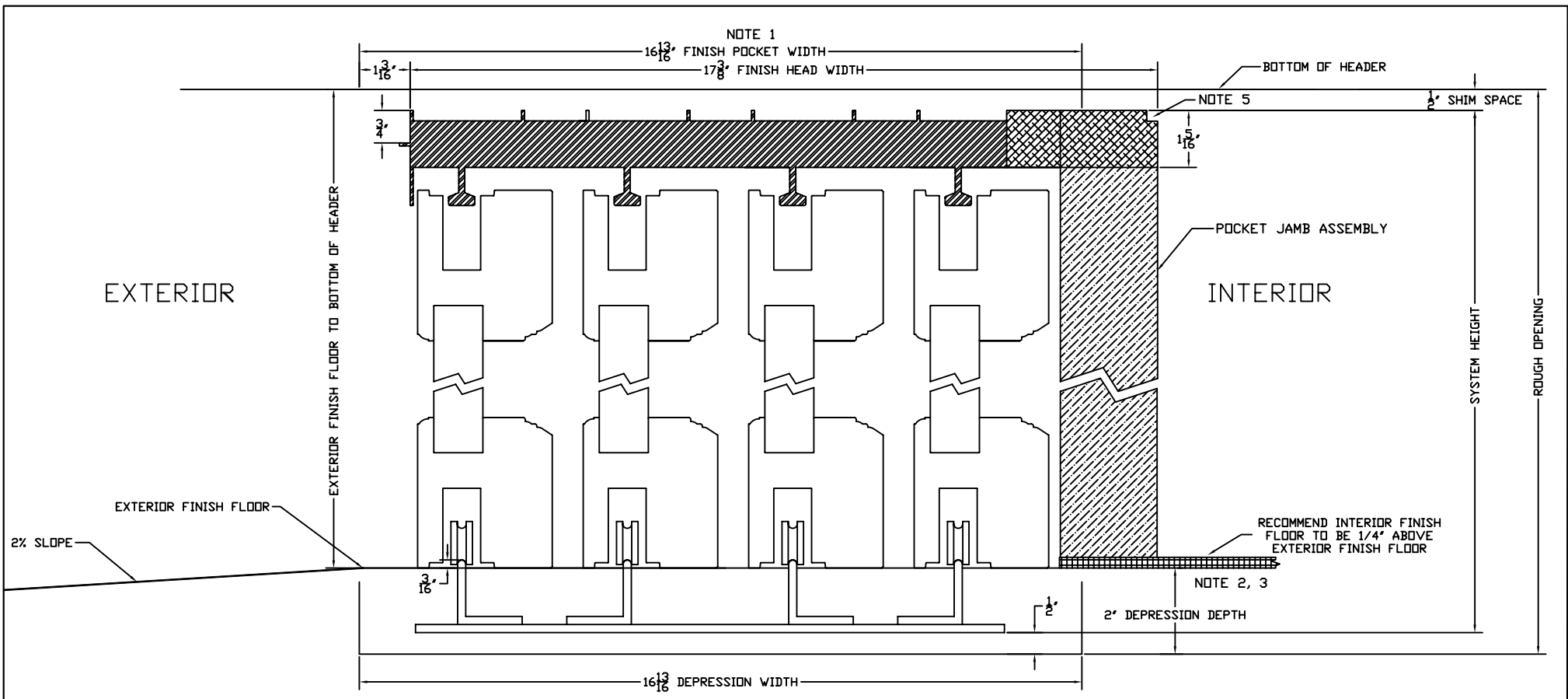





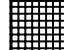
EXTERIOR ELEVATION

| | | | | | | | | | |
|---|--|--|--|---------------------------------------|--|--------------------------|--|-------------|------|
| CUSTOMER APPROVAL BLOCK | | | | SLIDING VISIONS | | TITLE XXXXP 1 1/2" TRACK | | | |
| <input type="checkbox"/> APPROVED <input type="checkbox"/> APPROVED AS NOTED <input type="checkbox"/> DISAPPROVED RESUBMIT | | | | | | ARCHITECTURAL COLLECTION | | | |
| | | | | | | DWN BY: AR | | SCALE: NONE | REV. |
| | | | | | | DATE: 02/13/07 | | DWG. NO. | |
| SIGNED _____ DATE _____ | | | | NO. DATE DESCRIPTION BY | | CHK. BY: CMP | | ALS-017 | |
| | | | | 0 10-06 APPROVED FOR CONSTRUCTION CMP | | APPD. BY: CMP | | SHT. 1 OF 1 | |
| *** All diagrams, drawings and other documents produced by Sliding Visions, Inc. are the sole property of Sliding Visions, Inc and under penalty of law, neither these documents nor the information they convey may be reproduced or transmitted to any third party without written consent. | | | | | | | | | |




NOTES:

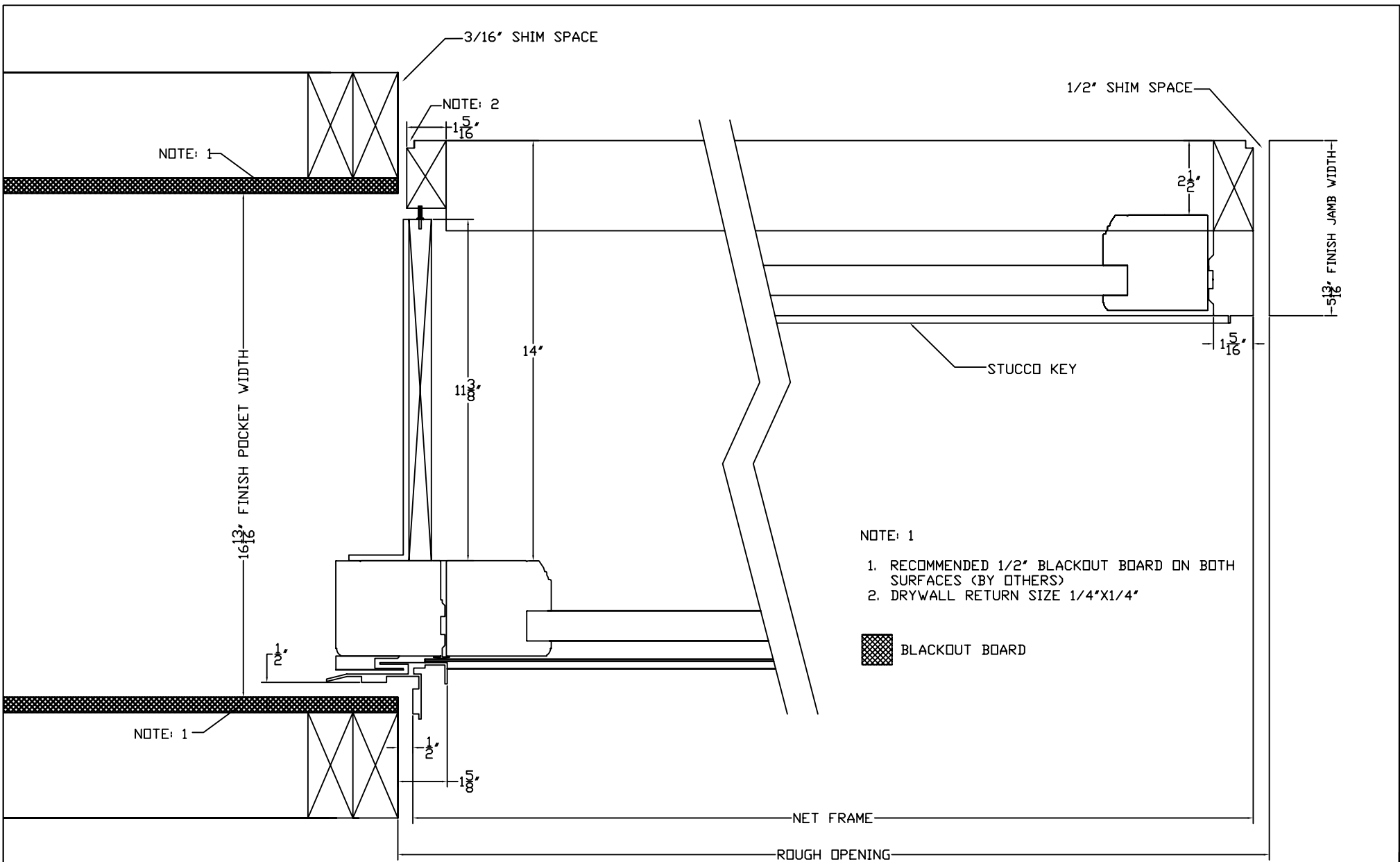
1. BLACKOUT BOARD ON BOTH INTERIOR SURFACES (BY CUSTOMER)
2. INCLUDES THICKNESS OF EXTERIOR FINISH FLOOR. FROM INTERIOR FINISH FLOOR ADD 1/4"
3. CUSTOMER IS REQUIRED TO DRY PACK TRACK DEPRESSION AFTER INSTALLATION BY DOOR CONTRACTOR
4. FINISH FLOOR BY OTHERS
5. DRYWALL RETURN SIZE 1/4"x1/4"
6. SEE SYSTEM ELEVATION DRAWING FOR ROUGH OPENING DIMENSIONS

| | | | |
|---|-----------|---|-----------------|
|  | ALUMINUM |  | WOOD JAMB |
|  | WOOD HEAD |  | INTERIOR FINISH |

STANDARD DETAIL FOR INFORMATION ONLY

| | | | | | | | |
|-----|-------|---------------------------|-----|------------------------|------------------------------------|--|---|
| | | | | SLIDING VISIONS | TITLE PXXXX 1 1/2" TRACK | | |
| | | DWN BY: AR | | | SCALE: NONE | | REV. |
| | | DATE: 10-16-06 | | | DWG. NO. OVLS-D-016 | |  |
| | | CHK. BY: CMP | | | SHT. 1 OF 1 | | |
| | | APPD. BY: CMP | | | | | |
| NO. | DATE | DESCRIPTION | BY | | | | |
| 0 | 10-06 | APPROVED FOR CONSTRUCTION | CMP | | | | |

*** All diagrams, drawings and other documents produced by Sliding Visions, Inc. are the sole property of Sliding Visions, Inc and under penalty of law, neither these documents nor the information they convey may be reproduced or transmitted to any third party without written consent.

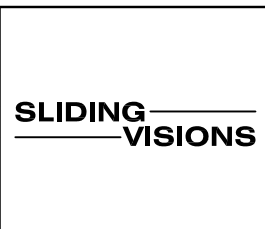


- NOTE: 1
1. RECOMMENDED 1/2" BLACKOUT BOARD ON BOTH SURFACES (BY OTHERS)
 2. DRYWALL RETURN SIZE 1/4"x1/4"

 BLACKOUT BOARD

STANDARD DETAIL FOR INFORMATION ONLY

| NO. | DATE | DESCRIPTION | BY |
|-----|-------|---------------------------|-----|
| 0 | 10-06 | APPROVED FOR CONSTRUCTION | CMP |



| | | |
|------------------------------|------------------------|------|
| TITLE PXXXX POCKET DETAIL | | |
| DWN BY: AR | SCALE: NONE | REV. |
| DATE: 10-16-06 | DWG. NO. OVLS-D-052 | 0 |
| CHK. BY: CMP | SHT. 1 OF 1 | |
| APPD. BY: CMP | | |

*** All diagrams, drawings and other documents produced by Sliding Visions, Inc. are the sole property of Sliding Visions, Inc and under penalty of law, neither these documents nor the information they convey may be reproduced or transmitted to any third party without written consent.