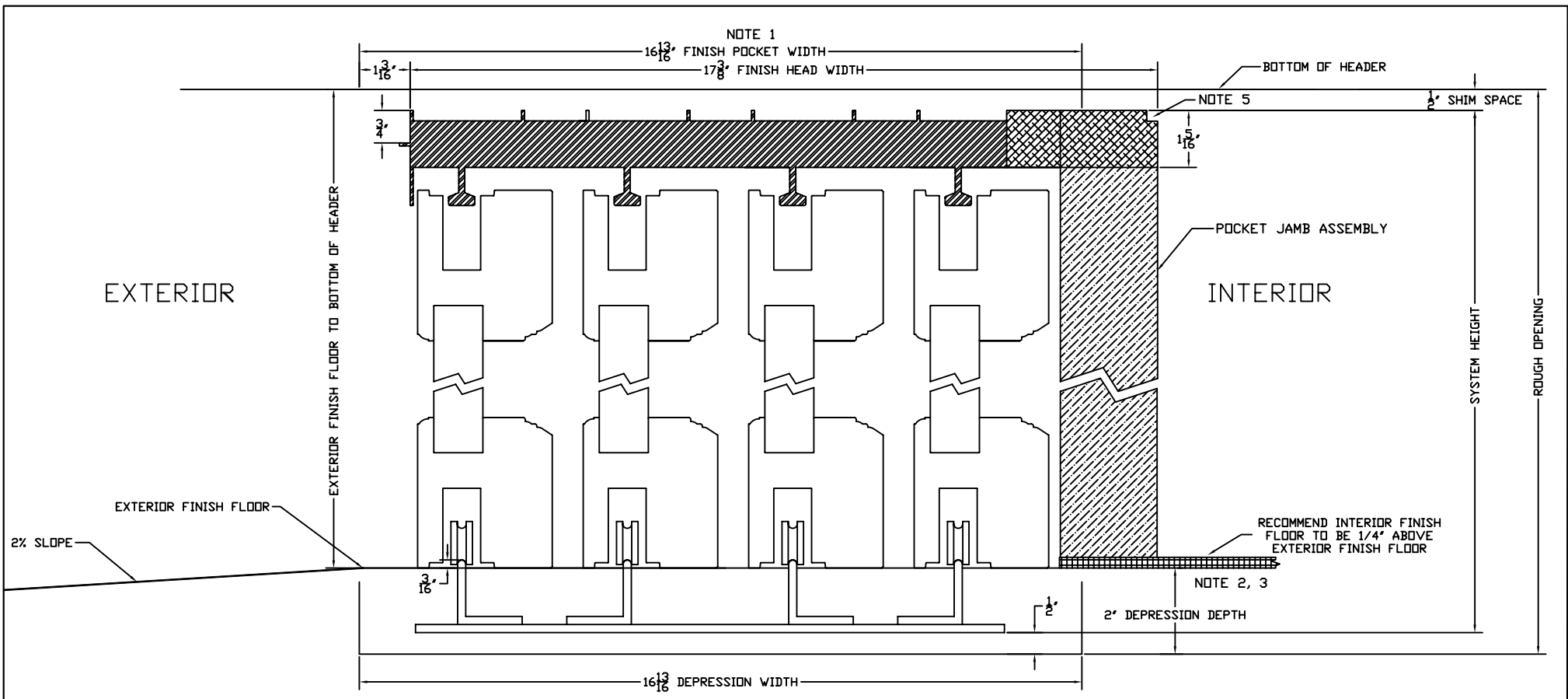





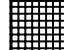
EXTERIOR ELEVATION

CUSTOMER APPROVAL BLOCK				TITLE PXXXX 1 1/2" TRACK	
<input type="checkbox"/> APPROVED <input type="checkbox"/> APPROVED AS NOTED <input type="checkbox"/> DISAPPROVED RESUBMIT				ARCHITECTURAL COLLECTION	
				DWN BY: AR	
				DATE: 02/13/07	
				SCALE: NONE	
				REV.	
				CHK. BY: CMP	
				DWG. NO. ALS-011	
				APPD. BY: CMP	
				SHT. 1 OF 1	
SIGNED _____		DATE _____		SLIDING VISIONS *** All diagrams, drawings and other documents produced by Sliding Visions, Inc. are the sole property of Sliding Visions, Inc and under penalty of law, neither these documents nor the information they convey may be reproduced or transmitted to any third party without written consent.	




NOTES:

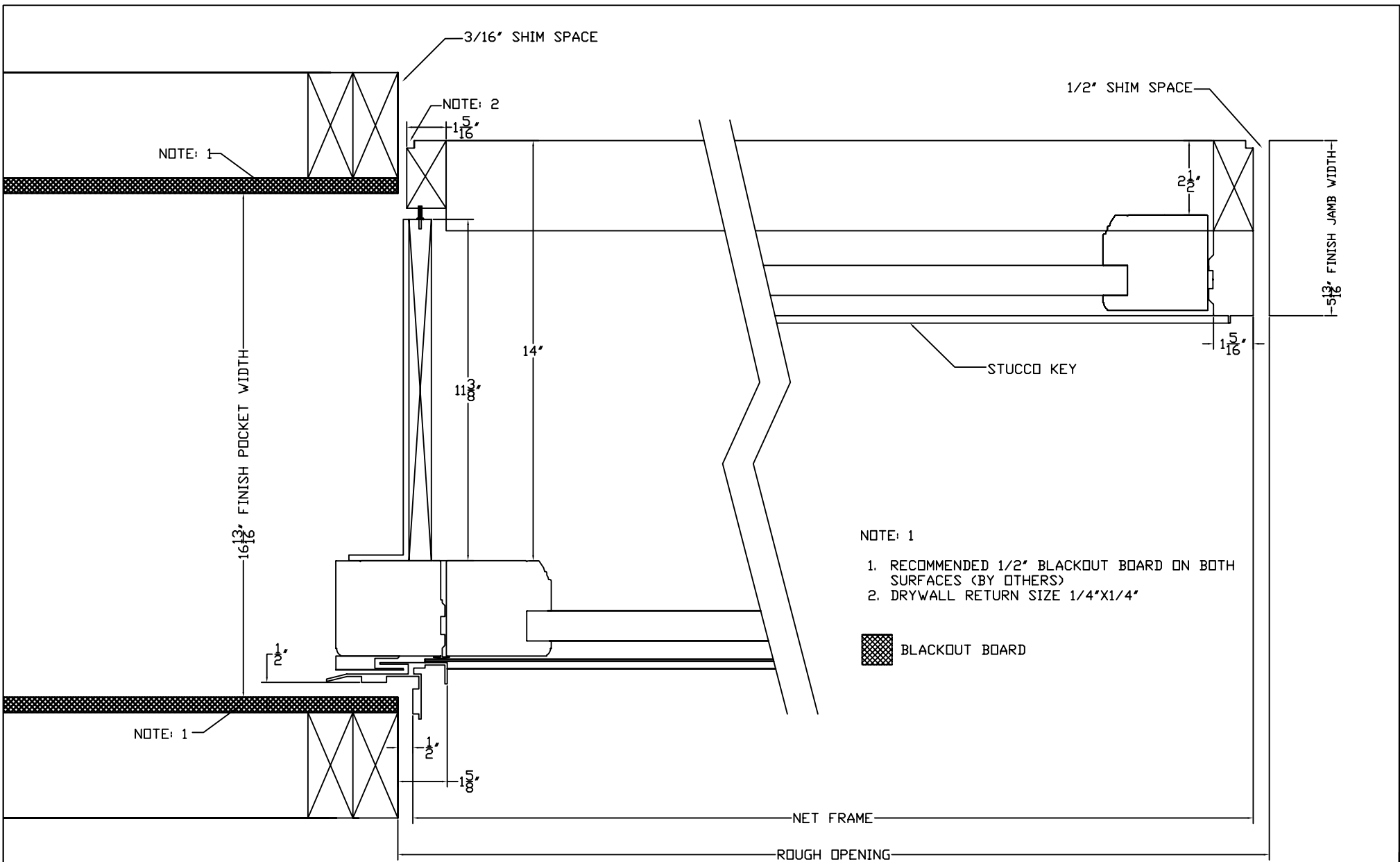
1. BLACKOUT BOARD ON BOTH INTERIOR SURFACES (BY CUSTOMER)
2. INCLUDES THICKNESS OF EXTERIOR FINISH FLOOR. FROM INTERIOR FINISH FLOOR ADD 1/4"
3. CUSTOMER IS REQUIRED TO DRY PACK TRACK DEPRESSION AFTER INSTALLATION BY DOOR CONTRACTOR
4. FINISH FLOOR BY OTHERS
5. DRYWALL RETURN SIZE 1/4"x1/4"
6. SEE SYSTEM ELEVATION DRAWING FOR ROUGH OPENING DIMENSIONS

	ALUMINUM		WOOD JAMB
	WOOD HEAD		INTERIOR FINISH

STANDARD DETAIL FOR INFORMATION ONLY

SLIDING VISIONS				TITLE PXXXX 1 1/2" TRACK				
				DWN BY: AR		SCALE: NONE		REV.
				DATE: 10-16-06		DWG. NO. OVLS-D-016		
				CHK. BY: CMP		SHT. 1 OF 1		
				APPD. BY: CMP				
NO.	DATE	DESCRIPTION	BY					
0	10-06	APPROVED FOR CONSTRUCTION	CMP					

*** All diagrams, drawings and other documents produced by Sliding Visions, Inc. are the sole property of Sliding Visions, Inc and under penalty of law, neither these documents nor the information they convey may be reproduced or transmitted to any third party without written consent.




- NOTE: 1
1. RECOMMENDED 1/2" BLACKOUT BOARD ON BOTH SURFACES (BY OTHERS)
 2. DRYWALL RETURN SIZE 1/4"x1/4"

 BLACKOUT BOARD

STANDARD DETAIL FOR INFORMATION ONLY

NO.	DATE	DESCRIPTION	BY
0	10-06	APPROVED FOR CONSTRUCTION	CMP

SLIDING VISIONS

TITLE PXXXX POCKET DETAIL		
DWN BY: AR	SCALE: NONE	REV.
DATE: 10-16-06	DWG. NO. OVLS-D-052	
CHK. BY: CMP	SHT. 1 OF 1	
APPD. BY: CMP		

*** All diagrams, drawings and other documents produced by Sliding Visions, Inc. are the sole property of Sliding Visions, Inc and under penalty of law, neither these documents nor the information they convey may be reproduced or transmitted to any third party without written consent.